

IMPORTANT INSTALLATION CONSIDERATIONS

- NOTE:** Some showers may not provide an effective shower when used with gravity fed heated water systems or where pressures are less than 150kPa at the outlet. Additionally, showers with flow rates of less than 9L/min may not allow the following to function correctly:
 - some instantaneous water heaters
 - some tempering valves
 - some thermostatic mixing valves
- Some shower heads only operate correctly when hot and cold water supplies are both mains pressure and may not be suitable for some instantaneous hot water services.
- When water pressure is in excess of 500kPa a pressure limiting device is required in accordance with AS/NZS 3500 1.12 recommendation.

Operating Temperature:

Hot: Max 80+C*

Cold: Min 5+C

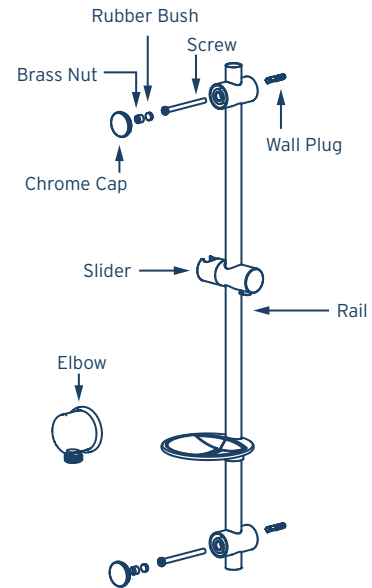
Inlet Connections:

All 1/2" BSP

IMPORTANT: Please read all of the instruction before installation

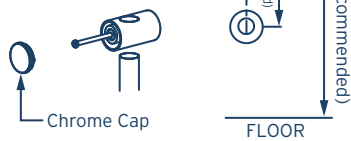
General:

- *This product must be installed in compliance with all relevant regional regulations.
- It is the responsibility of the installer to ensure a waterproof seal is achieved between the product and mounting surface. If in doubt about the quality of the seal, remove the product and reinstall using silicone to ensure a seal is achieved.
- All pipe work must be thoroughly flushed prior to the installation of the hose.
- After installation all connections must be checked for leaks.
- All outlets used primarily for personal hygiene shall deliver water at a safe temperature as per regional regulations.



STEP 1

Remove chrome caps from each pillar. Mount the top and bottom pillars in desired position with the screws and the wall plugs. Check the pillars are vertically aligned.



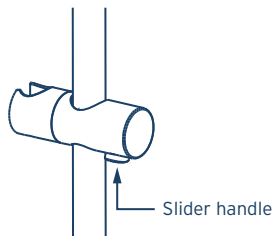
STEP 2

Insert the rail, slider and soap dish into place. Fix the rail in place using the rubber bush and brass nut on both pillars. Replace chrome pillar caps.



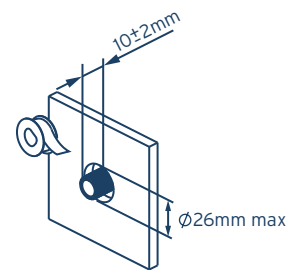
STEP 3

To adjust slider position, twist to unlock and twist back to lock the slider.



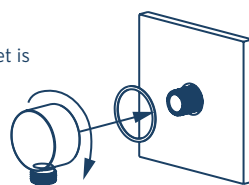
STEP 4

For the elbow, the wall lining hole should be sized as per the dimension shown in the diagram. Cut off the threaded nipple 10 ± 2 mm from the wall lining and apply thread seal tape to ensure a good seal.



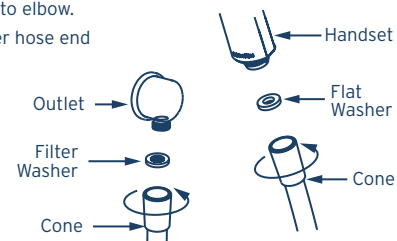
STEP 5

Screw the elbow onto the nipple ensuring that the o-ring is sufficiently compressed to create a watertight seal. Ensure that the elbow outlet is orientated downwards.



STEP 6

Connect cone end to filter washer to elbow. Connect other hose end to handset.



CARE & CLEANING:

Never use abrasives or abrasive cleaning agents to clean this product. Clean regularly with contamination free warm soapy water and a damp soft cloth.

THIS WARRANTY IS ISSUED BY:

GWA Group Limited
 ABN 35 000 189 499
 1 Melito Court Prestons
 NSW 2170
 www.flexispray.com.au

FLEXISPRAY REPLACEMENT GUARANTEE

The warranty covers replacement of faulty components only. Warranty does not cover inspection or installation. The product is guaranteed under normal domestic use and is subject to conditions. See flexispray.com.au for details. We reserve the right to vary specifications or delete models from our range without prior notification.

Customer Service (Australia)
 National Call Centre 13 14 16



AS/NZS 3662
 WMKT21090

